

# ACHIEVE REMOTE CONTROL

March, 2020

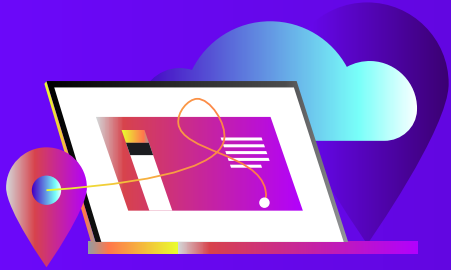
softserve

**SINCE 1993, WE HAVE SPECIALIZED IN  
DELIVERING PROJECTS REMOTELY.**

**ON MARCH 16, OUR GLOBAL TEAM OF  
OVER 9,000 EMPLOYEES  
TRANSITIONED TO SERVE 100%  
FROM HOME....OVERNIGHT.**

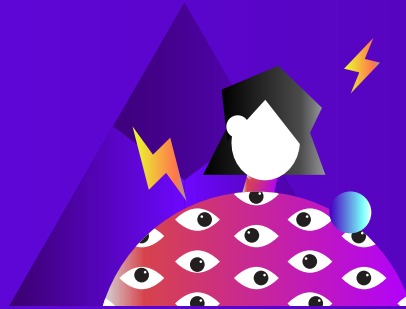
softserve

# IT'S NOT WHERE WORK IS DONE BUT HOW IT GETS DONE



**73%**

of all departments will  
have remote workers  
by 2028



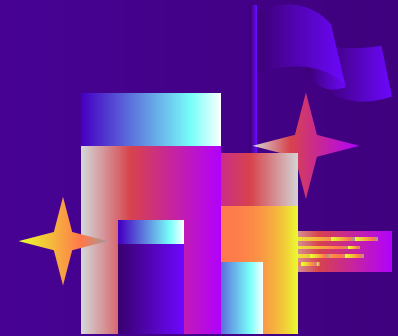
**75%**

of people who work  
remotely do so because  
there are fewer  
distractions



**25%**

lower employee  
turnover for companies  
allowing remote work  
over those that don't



**80%**

of businesses use social  
collaboration tools for  
enhancing business  
processes

Sources: UpWork and [OwlLabs, 2019](#)

**softserve**

# RADICAL DIGITAL COLLABORATION IS IN OUR CULTURE

## TEAMS

Teams have a shape, and your strategy needs to take that into account

## TOOLS

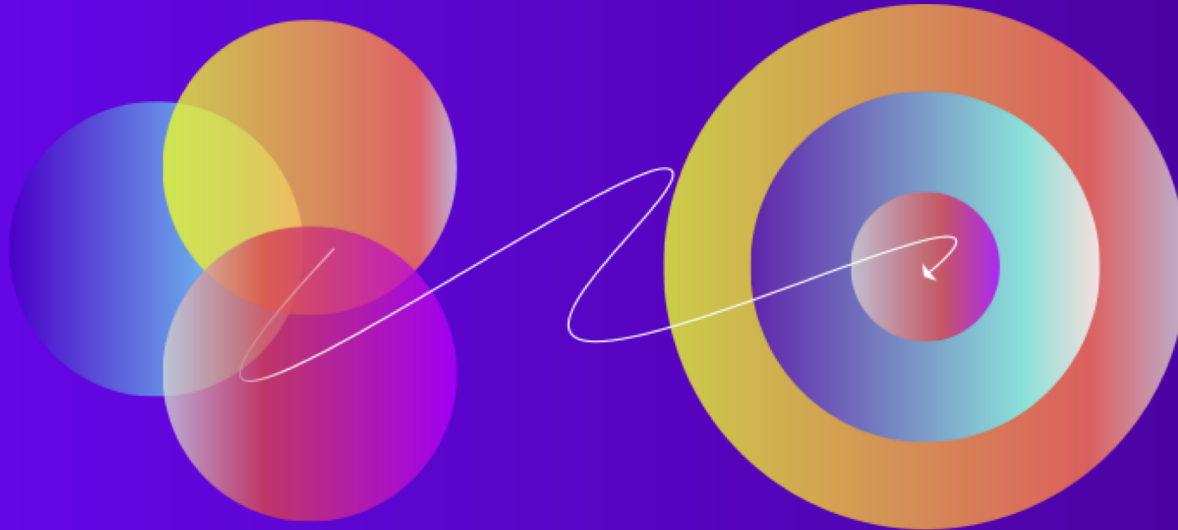
We're aligned on the essential technologies

## TECHNIQUES

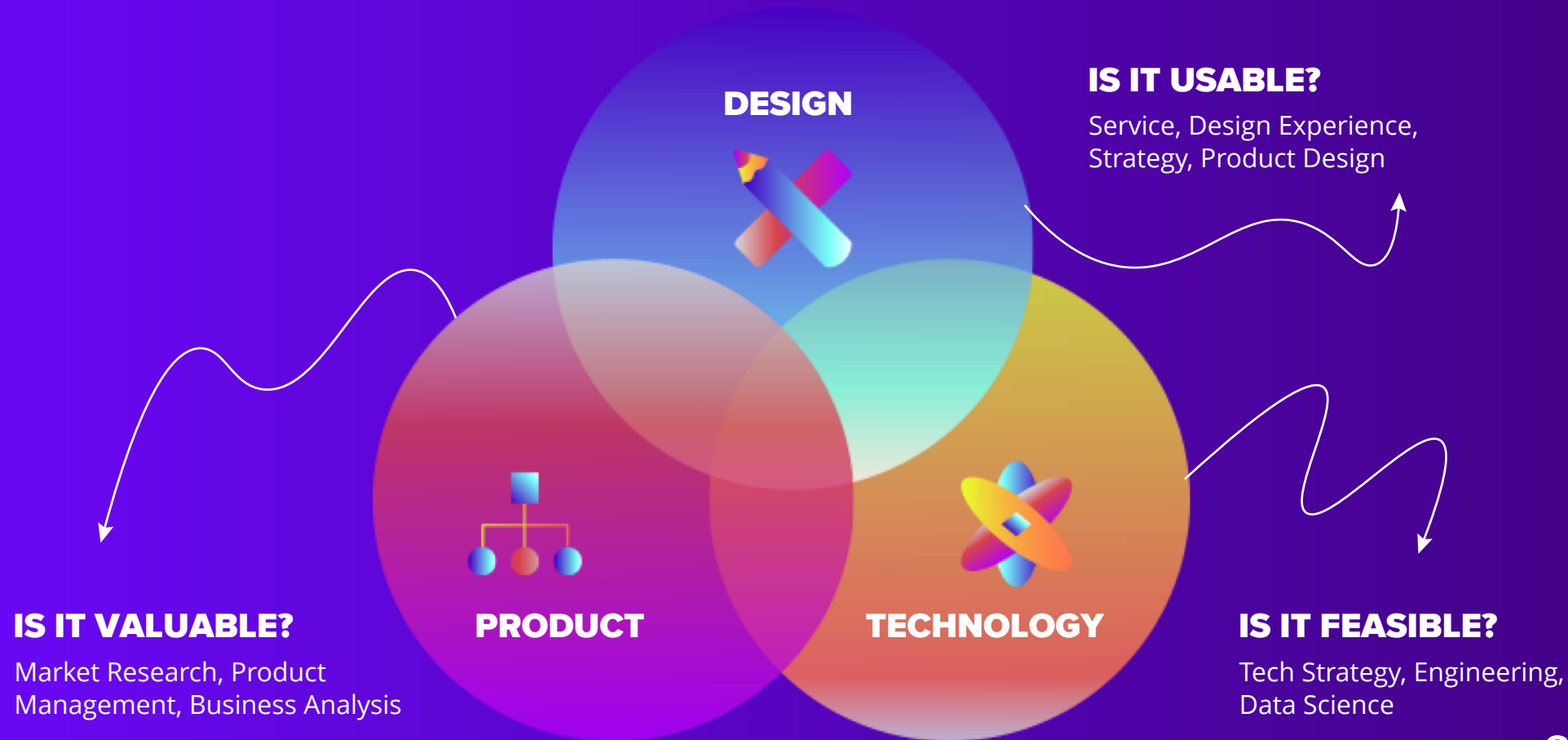
Rethinking our methods to be remote-friendly

**TARGET OUTCOME**

softserve



# OUR CROSS-FUNCTIONAL CAPABILITIES



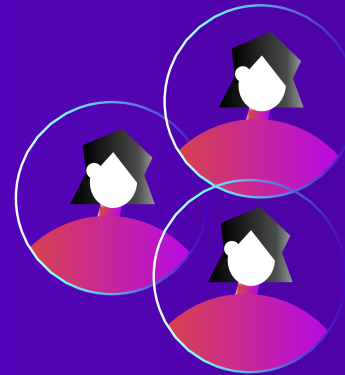
softserve

# REMOTE IS OFTEN THE BETTER MODE OF WORKING



## LOCAL MODE

- Only access a few experts
- Travel Costs/constraints
- Physical location required
- Local reach only



## REMOTE MODE

- Remotely access our global pool of talent
- Save on travel so you spend more on talent
- Global reach without traditional constraints
- Join from anywhere with internet

softserve

# WE OFFER REMOTE ACCESS TO OUR CENTERS OF EXCELLENCE (COE)



## RESEARCH & DEVELOPMENT

- Technology Incubation
- Technology PoC
- Technology Engineering Robotics
- Emotional Intelligence
- AR/VR



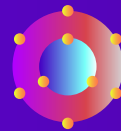
## EXPERIENCE DESIGN

- Design Thinking
- Design Research
- Design Strategy
- Product Design
- Service Design
- DesignOps



## SOLUTIONS

- Digital Strategy
- Business Analysis
- Product Management
- Architecture
- Performance Testing



## INTELLIGENT ENTERPRISE

- Big Data
- Data Science
- AI/ML
- IoT
- GDPR
- Blockchain



## PLATFORMS

- Salesforce
- Sitecore
- MS Dynamics
- AEM
- EPiServer
- MuleSoft
- Magento
- Dell Boomi
- Shopify
- Drupal



## CRITICAL SERVICES

- Cloud/DevOps
- Security & Governance
- Operations Support
- Application Support



## INNOVATION

- Innovation Strategy
- Innovation Platform

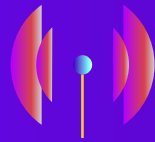
softserve

# HERE'S OUR APPROACH TO DELIVERING REMOTELY



## VIRTUAL ENGAGEMENT

- Virtual meetings
- Collaboration planning
- Scheduling key remote activities
- Proposal for discovery



## REMOTE DISCOVERY

- Design thinking
- Solution vision
- User validation
- Market validation
- Technical validation
- Implementation roadmap project plan
- Business functional requirements validation



## DISTRIBUTED IMPLEMENTATION

- Project management
- Requirements management
- Design delivery
- Product development
- Quality control



## GENERAL AVAILABILITY

- Project closure
- Stakeholder sign-off
- Knowledge transfer
- Production release



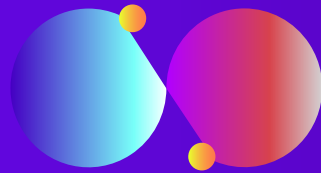
## SUPPORT & MAINTENANCE

- On-going product support and maintenance

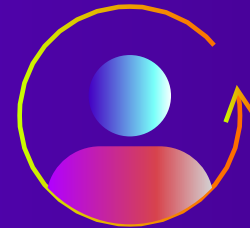
softserve



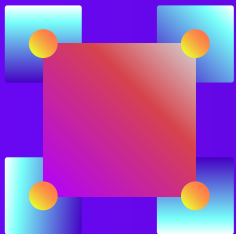
# WE HELP ACCELERATE YOUR GOALS WITH OUR REMOTE WORKSHOPS



**RISK  
MITIGATION**



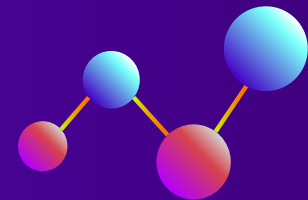
**ANYWHERE  
CO-CREATION**



**EVERYONE  
INCLUSION**



**TIME  
SAVING**



**ANYTIME  
ACCESS**

softserve

# SERVICES & SOLUTIONS THAT CAN BE DELIVERED REMOTELY



**DIGITAL  
STRATEGY**



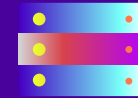
**VIRTUAL  
HACKATHON**



**SERVICE  
DESIGN**



**EXTENDED  
REALITY**



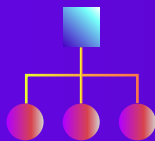
**DATA  
STRATEGY**



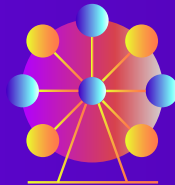
**TECHNICAL  
ASSESSMENT**



**SOLUTION  
DISCOVERY**



**IDEATION  
WORKSHOP**



**AUTOMATION  
EXPERIENCE**



**TECHNICAL  
WORKSHOP**



**DESIGN  
SPRINT**



**OPEN  
INNOVATION**

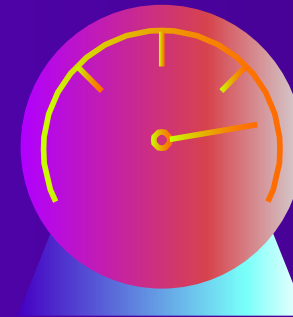
softserve

# ARE YOU REMOTE READY?

**RIGHT TOOLS**



**RIGHT PEOPLE**



**RIGHT TIME**

**softserve**

## CASE STUDY

# REMOTE DELIVERY FOR WEB UI APPLICATIONS

## ISSUE

Our client, Information Builders, wanted to create a whole new, functionally rich, and modern user interface to their product, in order to enable business users and IT to collaborate on data quality and governance.

## METHODOLOGY

SoftServe was entrusted from UI/UX work to develop prototype screens, to actual frontend and backend implementation. The majority of the work was **performed remotely** using SoftServe engineering facilities.

The logo for Information Builders. The word "Information" is in a large, white, sans-serif font. The letter "o" in "Information" is replaced by a circular icon containing several diagonal white lines. Below "Information" is the word "Builders" in a smaller, white, sans-serif font.

## VALUE

SoftServe helped Information Builders to substantially reduce costs and ship a number of product releases with the advanced functionality, helping them stay competitive.

softserve

**LET'S TALK  
ABOUT YOUR  
JOURNEY TO  
ACHIEVE REMOTE  
CONTROL.**

softserve