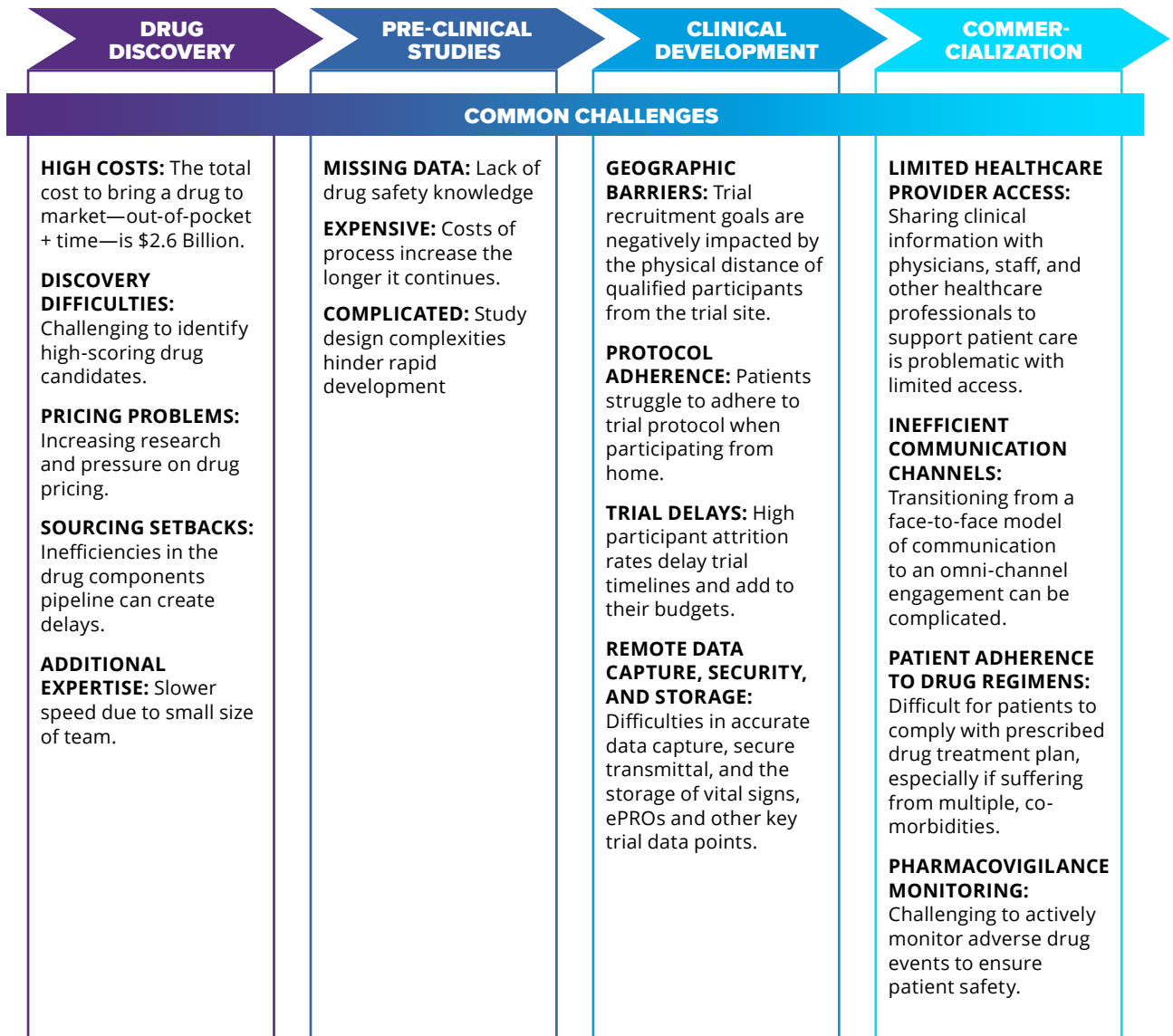


ACCELERATE NEW THERAPIES TO PATIENTS

SoftServe is your end-to-end collaborative tech partner with streamlined digital solutions for every stage of drug discovery, research, and development through to clinical trials and commercialization. From providing better insights to streamlining manual processes, our big data, AI, and analytics experts will guide you every step of the way. You'll get to market faster and more cost-effectively, leading to breakthrough advances and greater innovation.



SOFTSERVE'S END TO END SOLUTIONS

Click the solution title for more information.

DRUG DISCOVERY

LIFE SCIENCE SERVICES

Utilizing big data, AI, and more, SoftServe provides **drug discovery services** that including drug candidate research, molecule affinity, and yield predictions.

LIFE SCIENCE DATA PLATFORM

Our **Life Science Data Platform** provides advanced analytics to streamline team workflow and accelerate drug discovery pipeline processes.

XR MOLECULAR

Innovate drug research communication and collaboration with **XR Molecular**. Generate new drugs faster and visualize them in XR.

PRE-CLINICAL STUDIES

LIFE SCIENCE SERVICES and LIFE SCIENCE DATA PLATFORM

- Simplify pre-clinical research and studies.
- Foster team collaboration on drug testing.
- Provide personalized medicine in silico research to optimize future therapies.

CLINICAL DEVELOPMENT

HUMAN360° DXP PLATFORM FOR CLINICAL TRIALS

- Expands access to remote and underserved patient populations, allowing for sponsors to increase trial participation.
- Drives better patient engagement and trial protocol adherence.
- Reduces trial attrition rates.
- Accelerates and simplifies processes, increasing on-time and on-budget study completion and improving trial success rates.
- Ensures the accuracy, efficiency, and security of the data captured from trial participants.

BIOSENSE

Contactless vital sign measurement solution

- Supports clinical trials by taking vitals at a home or healthcare facility.
- Accelerates data collection and improves patient experience while assessing drug safety.
- Allows for wider audience participation—such as the elderly or disabled—by making the process easier.

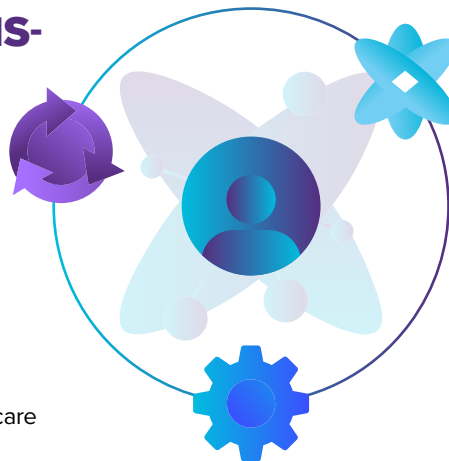
POST-LAUNCH

HUMAN360° DXP PLATFORM FOR OMNICHANNEL ENGAGEMENT

- Increases outreach, access, and communication with omnichannel engagement, providing an array of mobile, web, voice and secure telehealth solutions.
- Intuitive design of the digital components drives better patient engagement and drug adherence, improving health outcomes.
- Supports proactive monitoring of drug use, adverse event capture, and reporting to meet FDA guidelines.

BUSINESS TRANSFORMATION

- Unified digital strategy
- Business agility
- Market focus
- Disruptive business models
- Outcome and value-based care



INTELLIGENT OPERATIONS

- AI-driven insights & analytics
- Self-healing Infrastructure
- Connected, digital workforce
- Intelligent automation
- Security and compliance

PATIENT CENTRICITY

- Patient journey-based engagement
- Connected experiences
- Smart personalization
- Intelligent self-service
- Unified customer view

WHY SOFTSERVE

SoftServe is a trusted technology advisor and provider. We enable our clients across the healthcare continuum to build transformative patient experiences, gain data insights, and accelerate business outcomes.

OUR TEAM

1,500+

certified healthcare consultants & technologists

70+

active clients

PARTNER CERTIFIED

Google Cloud

Certified Healthcare and Life Sciences Expertise in the Google Cloud Partner Advantage Program

amazon

AWS Premier Healthcare competency certified Consulting Partner

COMPLIANCE STANDARDS



SoftServe's experts deliver innovation, quality, and speed built on a foundation of empathetic, human-focused experience design. We optimize and transform the way trial sponsors, CROs, clinical researchers, life science companies, and more do business, ensuring value and continuity from concept to release.

LET'S TALK

about your digital transformation journey and how SoftServe empowers our clients to deliver digital innovation, optimized clinical trials, and enhanced patient experiences.

NORTH AMERICAN HQ

+1 866 687 3588 (USA)
+1 647 948 7638 (Canada)

EUROPEAN HQ

+44 (0)800 302 9436

info@softserveinc.com
www.softserveinc.com

softserve