

The background of the image features a grid of dark, three-dimensional cubes. Most of the cubes are dark grey or black, but one cube in the lower right quadrant is a bright, glowing light blue, standing out from the others. The lighting creates soft shadows and highlights on the edges of the cubes, giving them a sense of depth and volume.

softserve

**HIGHLY OPTIMIZED
EDGE-COMPATIBLE
GEN AI-ENABLED
AVATARS AND NPCs
FOR EDUCATION AND
ENTERTAINMENT**

OVERVIEW

- 01** Digital Humans & Avatar Vision

- 02** Digital Humans & Avatar Market Opportunity

- 03** NVIDIA AI Enterprise

- 04** Gen AI 3D, 3D with Gen AI and Variations

- 05** Use Cases
 - ! Teachers
 - ! Smart/AI Toys for Kids
 - ! NPCs/Agents
 - ! SDRs
 - ! Humanoid Robots/Agents
 - ! Retail/Try On

- 06** Success Stories/Case Studies

- 07** Q&A



VISION & MARKET OPPORTUNITY



What's Next in AI
What's Next in AI

DIGITAL HUMAN & AVATAR VISION
SOONER OR LATER,
THEY ARE GOING
TO BE LIKE US



AVATAR SOLUTION MARKET SIZE GROWTH


Generative AI – NPCs | Media & Entertainment / Gaming & Social Tech

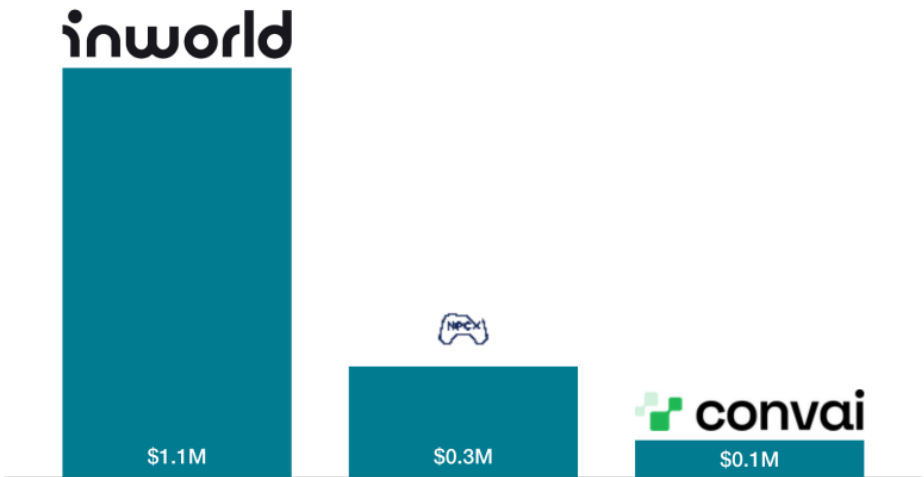


**FROM USD 139.2
MILLION IN 2023 TO USD
2,040.0 MILLION BY 2033**



CAGR OF 30.8%

 Funding per employee



Source: CB Insights

 CBINSIGHTS

MARKET SIZE

Generative AI – NPCs | Media & Entertainment / Gaming & Social Tech

EDUCATION

 **\$4.5 BILLION 2023, \$12 BILLION 2032**

**NPCs \$8.67 BILLION 2023,
\$22.3 BILLION 2032**

**SMART/AI TOYS
\$2.25 BILLION 2023,
\$8.5 BILLION 2034**



NVIDIA AI ENTERPRISE

! **NVIDIA OMNIVERSE™ AUDIO2FACE**
NVIDIA AUDIO2GESTURE
NVIDIA ACE

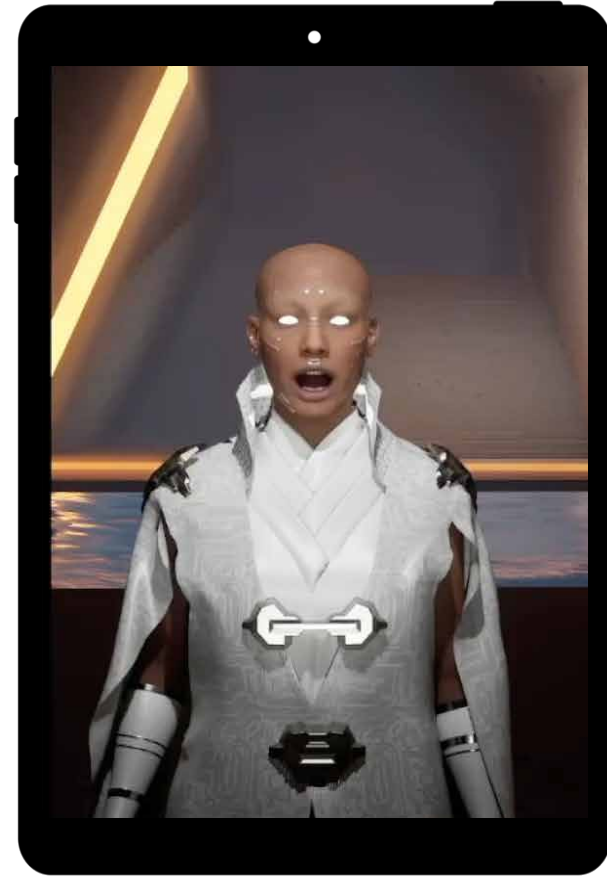
We had to perform research on the limitations and technology alternatives:

- Avatar creation approaches
- Web browser or mobile app no RTX requirement for the client
- Broader cloud infrastructure possibilities
- Different models for ASR/TTS/LLM
- Lip-sync options



GEN AI 3D, 3D WITH GEN AI AND VARIATIONS

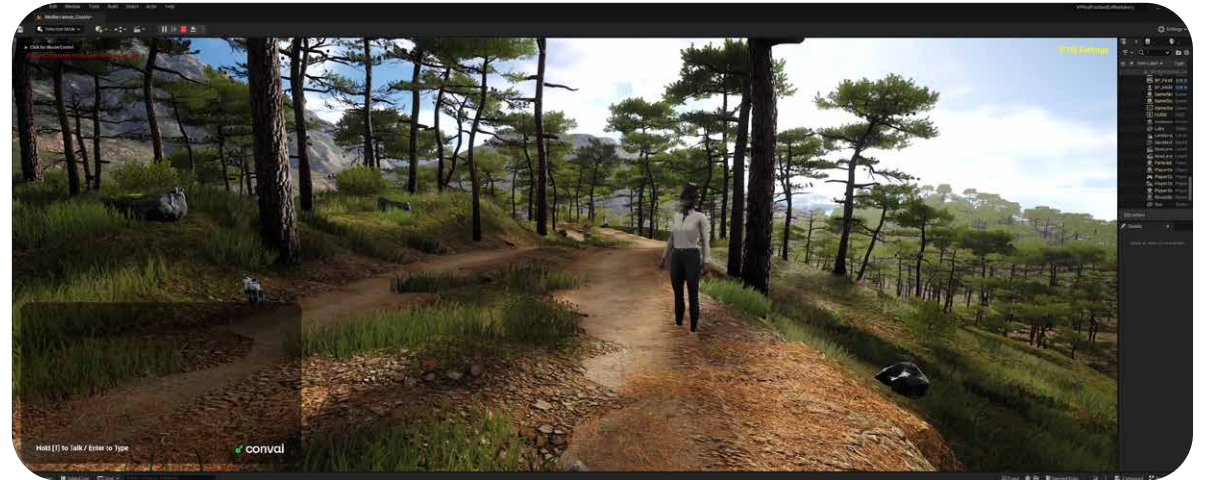
GEN AI 3D – not yet talking on the left and 3D with Gen AI on the right



USE CASES

Primary use cases with the largest potential impact and market:

- **TEACHERS**
- **SMART/AI TOYS FOR KIDS**
- **NPCs/AGENTS**
- **SDRs**
- **HUMANOID ROBOTS/AGENTS**
- **RETAIL/TRY ON**



CASE STUDIES



softserve

CASE STUDIES

Success Stories:

- ! Alnair
- ! Other Avatars
- ! Elephant
- ! Quantum Cats

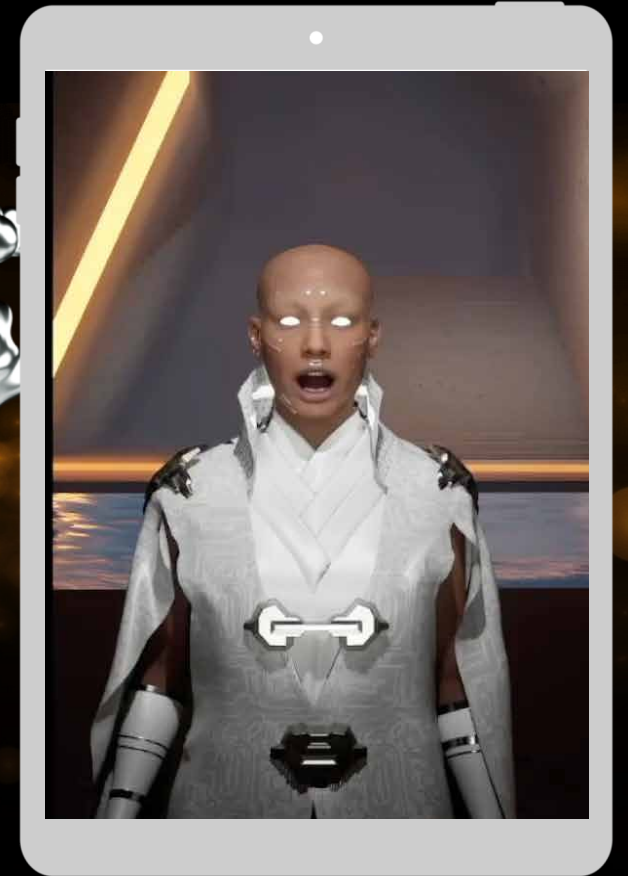


ALNAIR, THE META-HUMAN

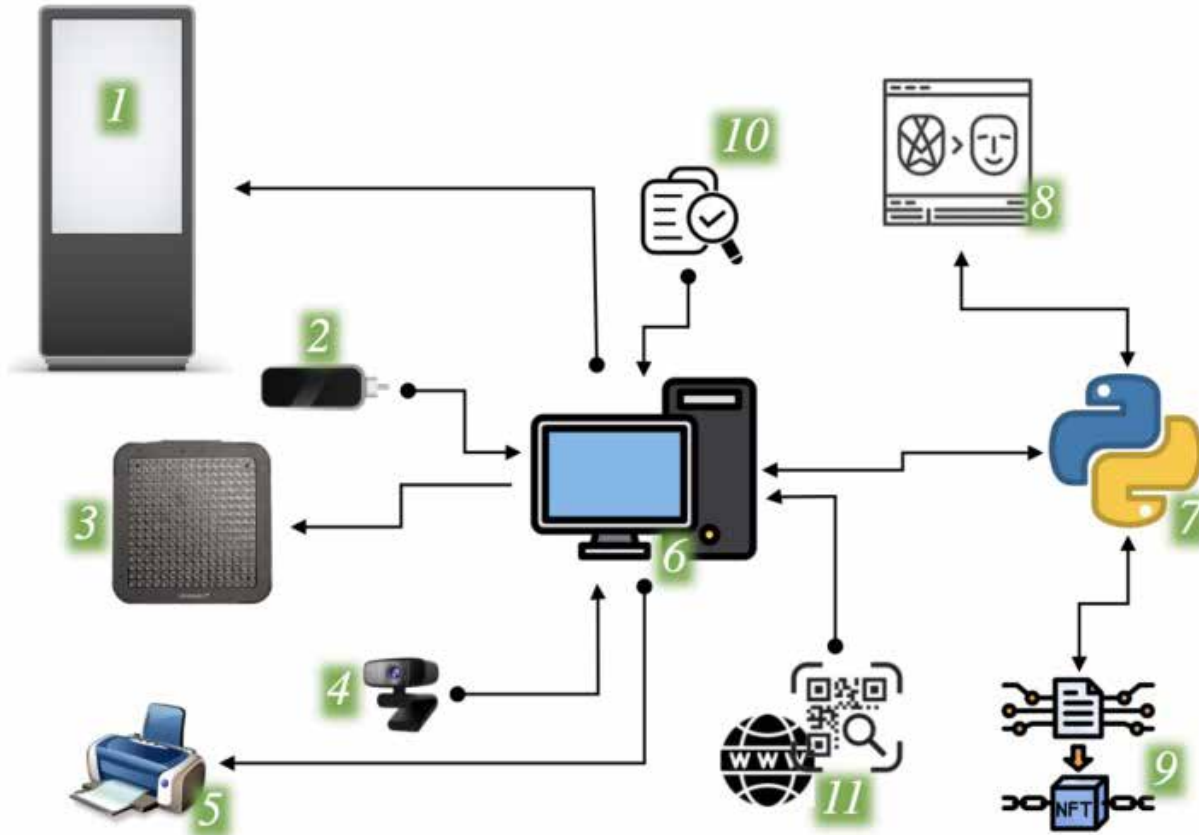
KNOW YOUR FUTURE

Do you ever think what will you do in the future digital world?

Discover



ALNAIR ARCHITECURE



1. Kiosk
2. Leap Motion camera
3. Ultraleap haptic display
4. Webcam
5. Printer
6. PC application
7. Python NN server
8. Face-swap generator of 3D avatars
9. NFT-minting the Polygon blockchain
10. LUT with predictions
11. Web-page with QR and NFT

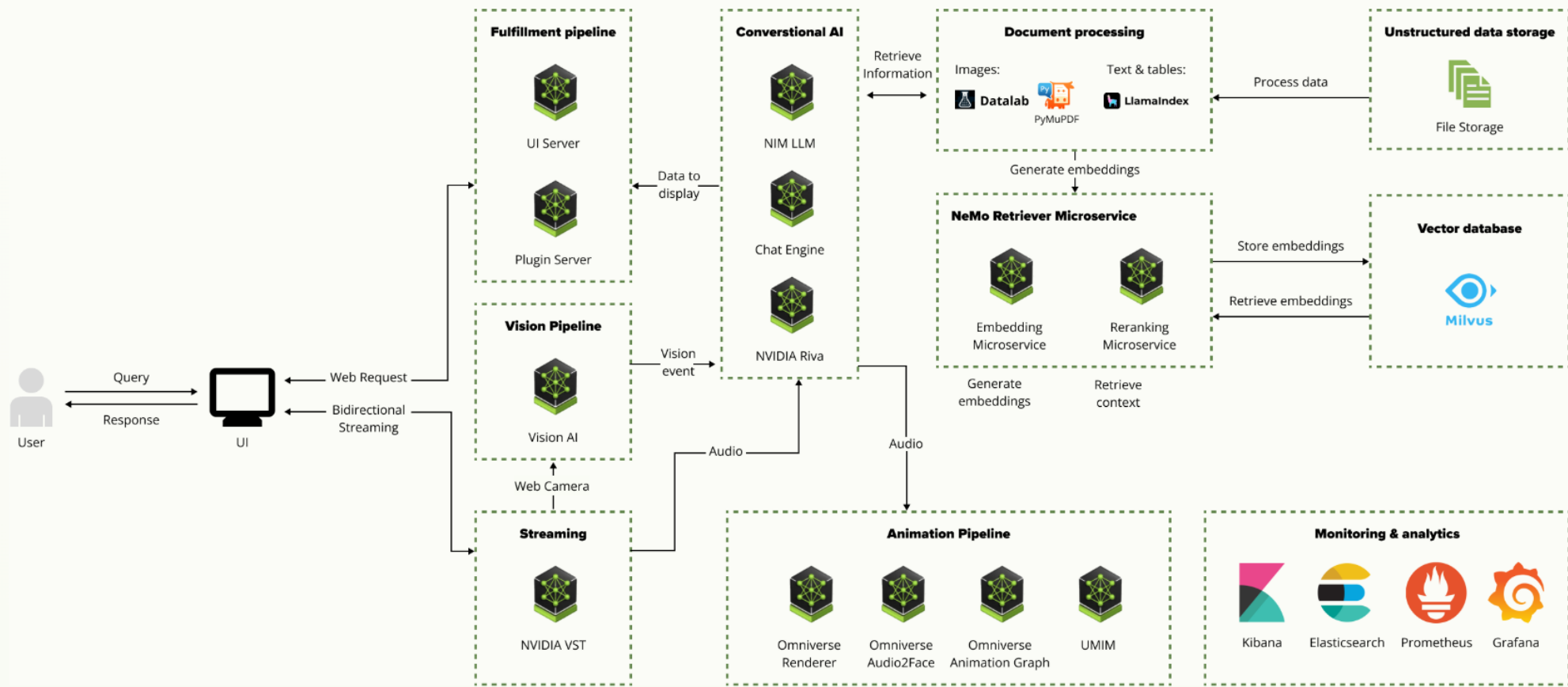
DIGITAL CONCIERGE

Enhance your customer service with Generative AI. SoftServe Digital Concierge, built with NVIDIA AI Blueprints and NVIDIA Avatar Cloud Engine (ACE), makes it all simple. Acting as a company representative, it offers in-depth knowledge, supports navigation, and answers inquiries 24/7.

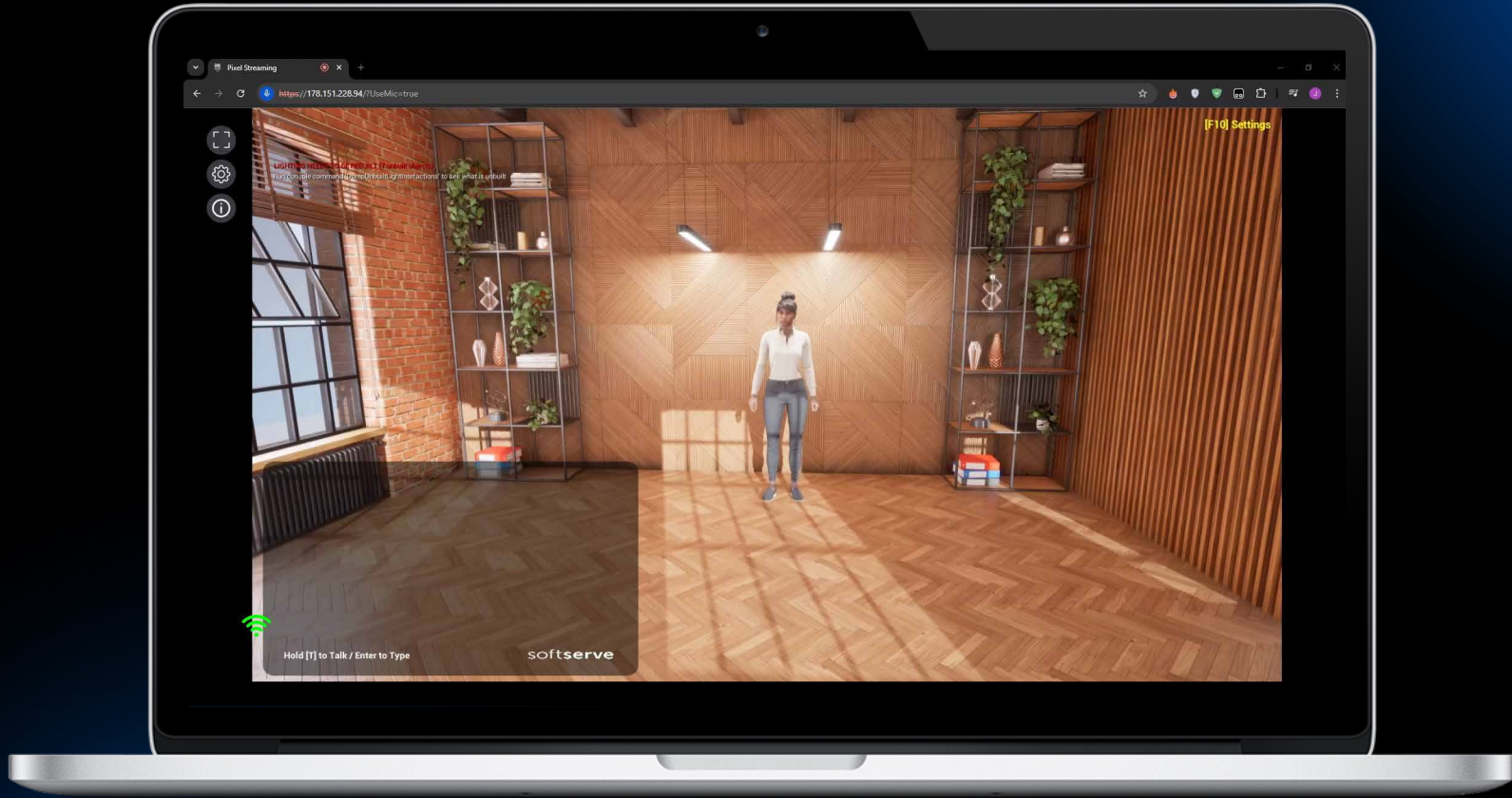
The solution reduces customer wait times and lets your team focus on complex, high-value tasks instead of handling routine queries.



DIGITAL CONCIERGE ARCHITECTURE



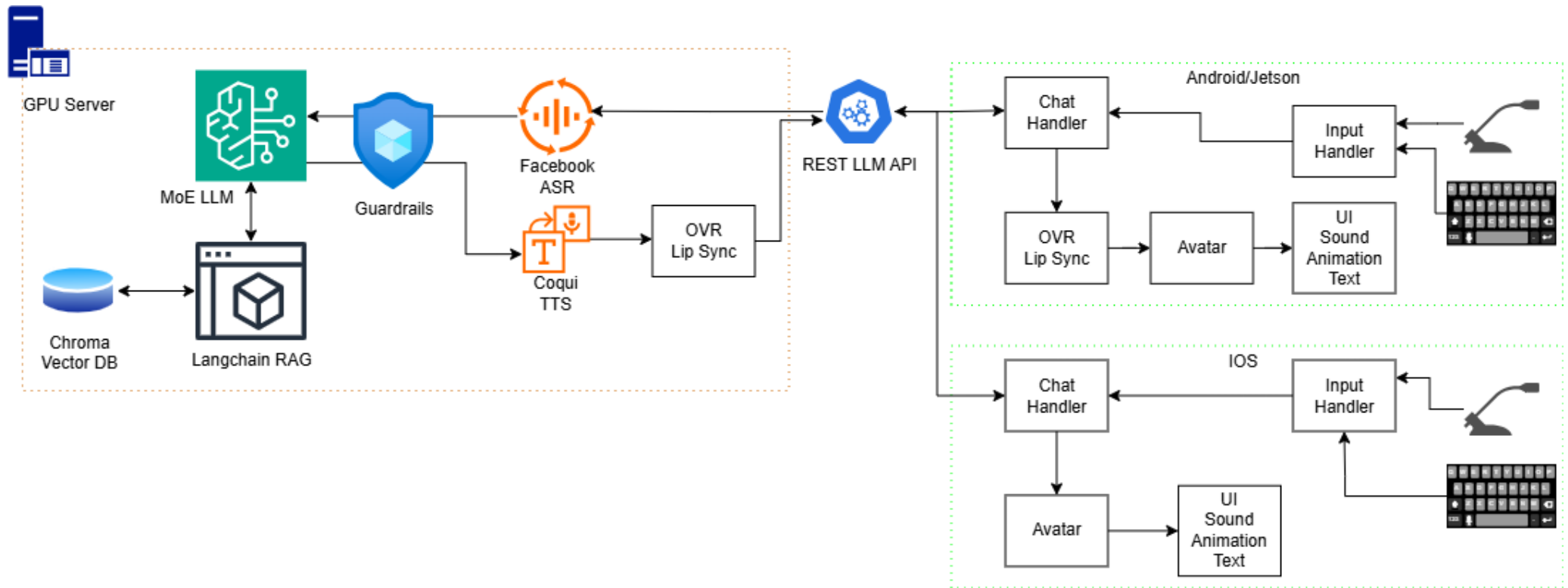
TEACHER AVATAR



● <https://info.softserveinc.com/increase-engagement-with-ai-generated-3d-avatars>

softserve

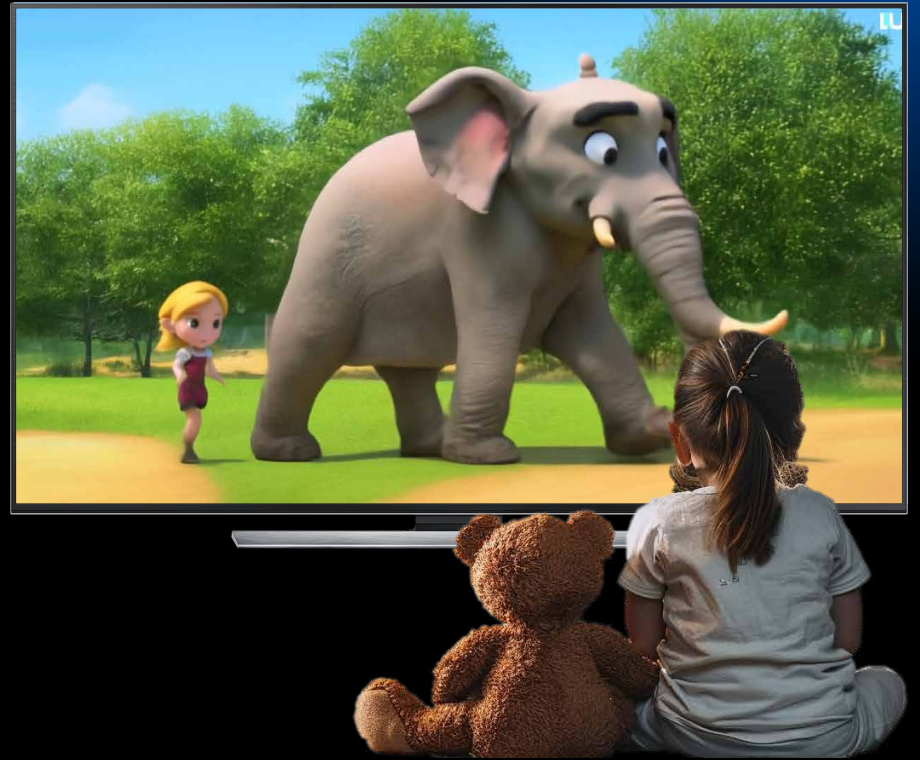
AVATAR FOR KIDS ARCHITECTURE



NPCS FOR EDUCATION



NPCS FOR EDUCATION



softserve

softserve

THANK YOU!



SAM FRISH

R&D Lead, SoftServe
sfrish@softserveinc.com



IHOR ROMANOVYCH

R&D Engineer, SoftServe
iromano@softserveinc.com



ANY QUESTIONS?
LET'S TALK

FOR THE FUTURE



softserve